



GOOD MORNING

Have Good Trading Day

WEDNESDAY



Price is what you pay.
Value is what you get.

- Warren Buffet

MARKET PULSE

INDIAN INDICES

NAME	CMP	NET CH.	%
SENSEX	26304	-514	-1.92
NIFTY	8108	-187	-2.26

INDIAN ADR'S

SYMBOL	CLOSE	GAIN/ LOSS %
DRREDDY	49.18	+1.76
HDFCBANK	67.49	-0.68
ICICIBK	8.15	+1.37
INFY	14.00	-0.43
TATAMOTOR	34.40	-1.77
WIPRO	9.28	+0.76

FII AND MF ACTIVITY

SYMBOL	In Crs.
FIIs Eq (Provisional)	-2353.82
FIIs Index Future	-1356.34
FIIs Index Options	-2297.67
FIIs Stock Future	-1012.67
FIIs Stock Options	-161.16
DIIs Eq (Provisional)	-104.83

CURRENCY

RBI RATE	15-NOV-2016
RUPEE - \$	67.7173
EURO	72.7758
YEN 100	62.6100
GBP	84.4232

MARKET PULSE

GLOBAL INDICES

NAME	CMP	NET CH.	%
DOW	18923	+54	+0.29
NASDAQ	5275	+57	+1.10
NIKKEI	17892	+224	+1.27
HANG SENG	22419	+95	+0.43
SGX NIFTY	8225	+110	+1.36

WORLD COMMODITIES

FUTURE	U\$\$	CHANGES
CRUDE	45.46	-0.35
NATURAL GAS	2.872	-0.013
GOLD	1231.9	+7.4
SILVER	17.205	+0.162
COPPER	2.4965	-0.0085

WORLD EVENTS

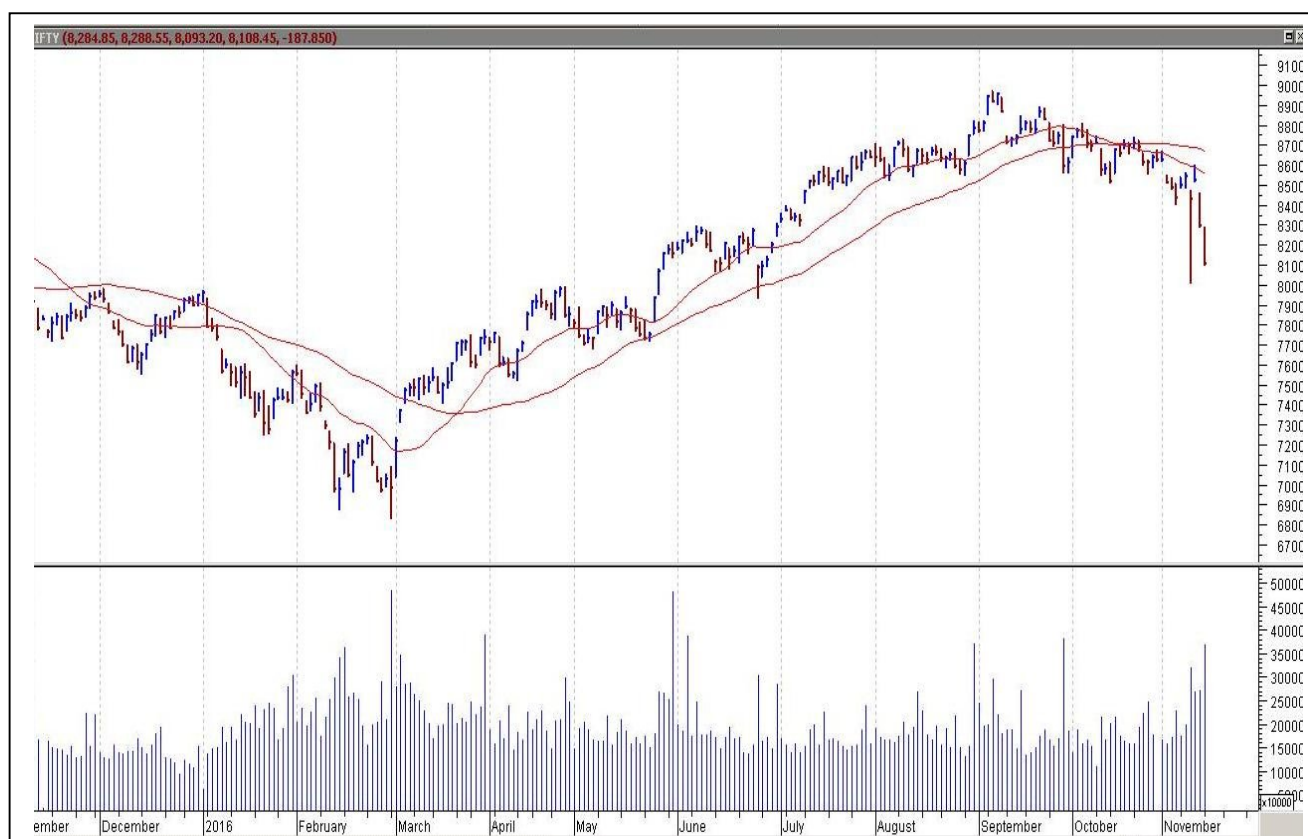
- US: PPI m/m
- Crude Oil Inventories
- UK: Average Earnings Index 3m/y
- Claimant Count Change

TOP STORY

- ACC / Shree cements Compat stayed order of CCI against these co's on cartelization.
- ONGC OVL plans to bid for gas blocks in Columbia.
- JM Financial acquired 17.53 percent stake in India Home Loan Ltd
- Wheels India signs agreement with FLUITECHNIK manufacture of Hydraulic components for mill manufacturers in India
- Smartlink Network invested Rs 38.5 crore in 2 subsidiaries
- LT Foods approved stock split from Rs 10 to Re 1 per share
- VA Tech Wabag associate company gets final arbitration award of USD 9 mn
- ABB India gets order to supply 1600 transformers to support railway expansion in India
- PNB Housing Q2 Net Profit Up 78.3% At `137.6 Cr Vs `77.2 Cr (YoY). Income From Ops Up 50.8% At `970.2 Cr Vs `643.2 Cr (YoY)



NIFTY CHART



MARKET COMMENTARY

Tuesday's session of trade turned out to be a bad day for the Indian benchmark indices, which got pounded by over two percent. The markets made a gap-down start and witnessed blood-bath in early deals as investors engaged in cutting down their bets. The rupee traded lower against the US dollar in early trade as the American currency strengthened overseas. For today's trade Nifty likely to trade in the range between 8125 - 8145 in the upper side and 8075 – 8065 in the lower side.

MARKET LEVELS

	CMP	SUPPORT LEVELS				RESISTANCE LEVELS			
NIFTY	8108	8075	8065	8035	8015	8125	8145	8155	8185
USDINR	67.86	67.75	67.65	67.55	67.45	67.95	68	68.1	68.15s



BULK DEALS (BSE)

SCRIP	CLIENT NAME	BUY/SELL	QUANTITY	PRICE
ACC	HOLDERIND INVESTMENTS LIMITED	B	7,870,000	1,536.53
ACC	NOMURA INDIA INVESTMENT FUND MOTHER FUND	S	986,171	1,538
AMBUJACEM	HOLDERIND INVESTMENTS LIMITED	B	39,100,000	240.52
DECNGOLD	VISU ASSOCIATES	S	800,000	45.28

BULK DEALS (NSE)

SCRIP	CLIENT NAME	BUY/SELL	QUANTITY	PRICE
CANFINHOME	CATAMARAN CAPITAL	SELL	153041	1290.32
GRETEX	BAKUL GARMENTS LLP	BUY	36000	20.25
SUJANATWR	AJIT KUMAR JOGENDARPRASAD SINGH	SELL	310000	8.33

SCRIP'S IN F&O BAN

(To resume for normal trading below 80% of market wide limit required)

NIL

Initial Public Offering (IPO)

Company Name	Security type	Issue Start Date	Issue End Date	Status
GreenSignalBiopharma Ltd	Equity	09-Nov-2016	11-Nov-2016	Open
Varun Beverages Ltd	Equity	26-Oct-2016	28-Oct-2016	Closed



NIFTY 50 STOCKS: SUPPORT & RESISTANCE						
Symbol	Close	Support 1	Support 2	Pivot Point	Resistance1	Resistance2
ACC	1335	1298	1262	1365	1402	1468
ADANI PORTS	267	256	246	268	279	291
AMBUJACEM	209	201	194	215	222	235
ASIANPAINT	891	850	808	910	952	1012
AXISBANK	479	470	460	486	496	513
BAJAJ-AUTO	2576	2505	2433	2582	2653	2730
BANKBARODA	174	168	161	172	179	184
BHARTIARTL	303	296	290	301	307	311
BHEL	134	131	129	135	137	141
BOSCH LTD	19511	19122	18732	19701	20090	20670
BPCL	644	625	607	640	658	673
CAIRN	234	225	216	241	250	266
CIPLA	552	534	515	547	566	580
COALINDIA	314	307	301	318	324	335
DRREDDY	3311	3268	3226	3299	3342	3373
GAIL	436	422	408	434	448	461
GRASIM	819	787	755	844	876	932
HCLTECH	771	742	714	765	793	816
HDFC	1226	1199	1171	1228	1256	1285
HDFCBANK	1255	1241	1226	1265	1279	1303
HEROMOTOCO	2892	2846	2800	2914	2960	3027
HINDALCO	168	163	157	172	177	186
HINDUNILVR	805	789	773	800	816	826
ICICIBANK	270	264	258	272	278	287
IDEA	71	70	68	71	73	74
INDUSINDBK	1093	1049	1004	1124	1169	1244
INFY	924	908	893	924	939	955
ITC	238	233	229	240	244	251
KOTAKBANK	790	776	762	797	811	832
LT	1370	1353	1336	1380	1397	1425
LUPIN	1441	1424	1408	1445	1462	1483
M&M	1238	1186	1133	1222	1274	1311
MARUTI	4847	4729	4611	4924	5042	5237
NTPC	150	149	147	151	152	154
ONGC	276	268	260	277	285	294
PNB	155	150	146	156	160	166
POWERGRID	185	183	181	185	187	189
RELIANCE	985	977	968	988	997	1009
SBIN	278	271	265	277	284	290
SUNPHARMA	682	670	657	688	700	718
TATAMOTORS	457	445	433	465	477	497
TATAPOWER	69	68	66	70	72	74
TATASTEEL	393	383	374	401	410	428
TCS	2121	2063	2005	2110	2169	2216
TECHM	431	426	422	432	436	442
ULTRACEMCO	3364	3267	3169	3441	3538	3712
VEDL	210	202	194	216	224	238
WIPRO	448	441	434	446	453	458
YESBANK	1157	1130	1103	1174	1201	1245
ZEEL	454	439	425	465	479	504



CORPORATE ACTION / BOARD MEETINGS

NSE Download Ref No: NSE/CML/33554:- Face Value Split –KarurVysya Bank Limited (KARURVYSYA) from Rs. 10 to Rs. 2 w.e.f. November 17, 2016

BOARD MEETINGS

COMPANY NAME	DATE	PURPOSE	RS. PER SH.
PIIND	16-Nov-16	Dividend	1.5
MARICO	16-Nov-16	Dividend	1.5
OCCL	16-Nov-16	Dividend	3
GPPL	16-Nov-16	Dividend	2
WOCKPHARMA	17-Nov-16	Dividend	
CARERATING	17-Nov-16	Dividend	6
TAKE	17-Nov-16	Dividend	0.3
PAGEIND	17-Nov-16	Dividend	
SHRIPISTON	17-Nov-16	Dividend	3
SHARDACROP	17-Nov-16	Dividend	2
KITEX	17-Nov-16	Dividend	0.75
KARURVYSYA	17-Nov-16	Face value Split From Rs 10 To Rs 2	
LTI	17-Nov-16	Dividend	
GDL	17-Nov-16	Dividend	
AMRUTANJAN	17-Nov-16	Dividend	
ORIENTPPR	18-Nov-16	Rights 1:28 @ PremRs 67/- Per Share	
LTTS	21-Nov-16	Dividend	
MAANALU	21-Nov-16	Dividend	
GABRIEL	21-Nov-16	Dividend	
MANAPPURAM	22-Nov-16	Dividend	0.5
GILLETTE	22-Nov-16	Dividend	20
HGS	22-Nov-16	Dividend	2.5

NEWS & RUMOURS:

- Gold (Spot Dollar) major support = \$1191/\$1161 & Resistance = \$1267/\$1294.
- Crude oil range->\$41 to \$51.
- Bonds Rise with Emerging Markets after Trump Selloff; Oil Surges: - The fallout from Donald Trump's election to the U.S. presidency eased off in financial markets with Treasuries and emerging markets halting their routs. Oil surged.
- Dollar index holds steady near fresh 11-month peak: - The dollar held steady near a fresh 11-month peak against the other major's currencies on Tuesday, as upbeat U.S. data boosted optimism over the U.S. economy and added to expectations for a rate hike by the Federal Reserve.
- Oil futures surge 4% on renewed hopes for OPEC supply deal: - Oil prices were higher during North America trading on Tuesday, [extending overnight gains](#) as market participants continued to weigh prospects of a coordinated production cut among major global oil producers.
- U.S. natural gas climbs to 1-week high on cold East Coast weather: - U.S. natural gas futures pushed higher for the second day in a row on Tuesday, climbing to a one-week high as colder-than-normal temperatures are seen hitting the U.S. East Coast next week. Updated forecasting models showed a weather system pushing into the western U.S. later this week, which will then track toward the eastern U.S. next weekend, bringing rain, snow, and cooler than normal temperatures along with it.
- Gold falls back towards 6-month lows after upbeat U.S. data: - Gold futures [erased overnight gains](#) in North American trading on Tuesday, falling back towards a six-month low after data showed that U.S. retail sales rose more than expected in October, boosting optimism over the health of the economy

TRENDS & OUTLOOK – DATE: 16- Nov- 2016

PRECIOUS METALS:

COMMDITY (MCX)	S2	S1	PIVOT POINT	R1	R2
GOLD (Dec)	28765	29030	29345	29630	29899
SILVER (Dec)	38500	40000	41200	42600	43786

BASE METALS

COMMDITY (MCX)	S2	S1	PIVOT POINT	R1	R2
COPPER (Nov)	357	363	370	380	387
ZINC (Nov)	167.55	171.25	174.25	178.50	181.60
LEAD (Nov)	141.55	144.70	147.55	151.90	154.60
NICKEL (Nov)	720	741	756	786	799

ENERGY

COMMDITY (MCX)	S2	S1	PIVOT POINT	R1	R2
CRUDE OIL (Nov)	2820	2910	3045	3184	3333
NATURAL GAS (Nov)	176	183	189	196	203

DATA TALKS : TODAY'S ECONOMIC DATA :

FOMC Member Fischer Speaks, FOMC Member Bullard Speaks, PPI m/m, Core PPI m/m, Capacity Utilization Rate, Industrial Production m/m, NAHB Housing Market Index, Crude Oil Inventories.



LET THE
**WOMAN
POWER RISE**

**WOMEN
DESK**

All the Ladies in the house are
cordially invited to come
& explore their trading talents.

TOLL FREE: 18001030059



Registered Office

Indira House, 3rd Floor, 5 Topiwala Lane,

Opp. Lemington Road Police Station, Grant Road (East), Mumbai - 400007.

Corporate Office

'Ramavat House' E-15, Saket Nagar, Indore - 452018 (M.P.)

Customer Care

Tel: +91-731-4097170/ 71/ 72/ 73/ 74 M. +91 93031 72345

Email: customercare@indiratrade.com www.indiratrade.com



INSTITUTIONAL DEALING UNIT

Africa House, 5, Topiwalla Lane, Lamington Road, Mumbai, 400007

Tel: +91 22 30080678 Fax : +91 22 23870767 Email : ie@indiratrade.com

Disclaimer

This report is for private circulation within the Indira Group. This report is strictly confidential and for information of the selected recipient only and may not be altered in any way, transmitted to, copied or distributed, in part or in whole, to any other person or to the media or reproduced in any form. This report should not be construed as an offer or solicitation to buy or sell any securities or any interest in securities. It does not constitute a personal recommendation or take into account the particular investment objectives, financial situations, or any such factor. The information, opinions estimates and forecasts contained here have been obtained from, or are based upon, sources we believe to be reliable, but no representation of warranty, express or implied, is made by us to their accuracy or completeness. Opinions expressed are our current opinions as of the date appearing on this material only and are subject to change without notice.